

## PRODUCT OVERVIEW

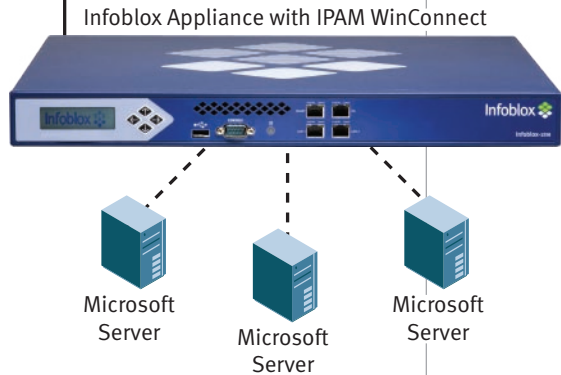
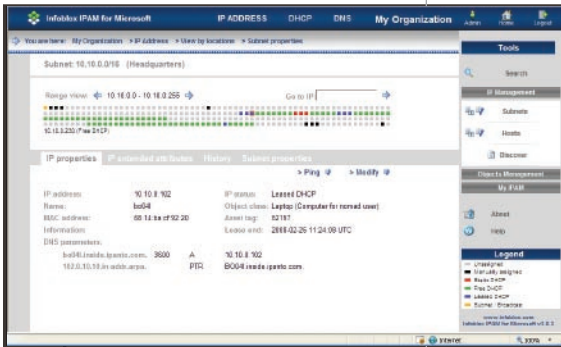


Figure 1. The Infoblox IPAM WinConnect solution delivers a powerful web-based GUI and simplified, appliance-based delivery.

IP address management (IPAM) lets customers manage their IP environment and IP address data at an enterprise-wide level, delivering unified management, monitoring, and administration while providing centralized auditing and reporting.

The Infoblox IPAM WinConnect™ system provides powerful IP address management capabilities for Microsoft DNS and DHCP services, enabling IT administrators to replace spreadsheets, manual processes, and home-grown tools with a powerful, cost-effective, dedicated solution.

Infoblox IPAM WinConnect is delivered on a security-hardened appliance, making it extremely easy to install and configure. Communications with Microsoft servers uses the standard Microsoft Windows Management Instrumentation (WMI) protocol and does not require installation of any software agents on the servers being monitored or managed. This non-invasive approach greatly simplifies installation and ongoing maintenance of the solution.

Importing data from your current network to the Infoblox IPAM WinConnect database is simple:

- You can easily import data from existing IPAM spreadsheets;
- Powerful network discovery tools efficiently sweep your network to detect devices (without flooding the network with excessive traffic);
- All DNS and DHCP data on Microsoft servers is automatically collected and maintained in real-time.

The Infoblox IPAM WinConnect solution also offer a tight integration into most existing Enterprise Management System (EMS) like CiscoWorks.

The powerful web interface provides senior IT administrators, technicians, and help desk personnel with appropriate visibility and control capabilities from anywhere, using any standard browser. Built entirely using industry standards, Infoblox IPAM WinConnect provides a powerful API that enables integration with other enterprise applications.

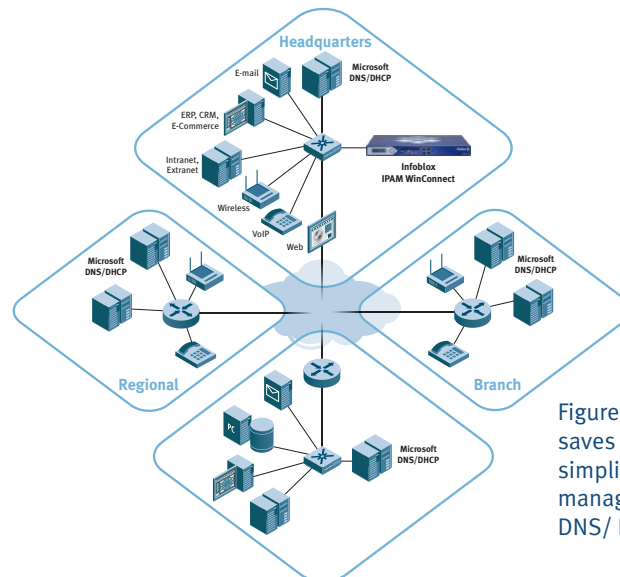


Figure 2. Infoblox IPAM WinConnect saves time and money by greatly simplifying and distributing the management of your existing DNS/ DHCP infrastructure.

Features	
<b>Integrated IP directory</b>	<ul style="list-style-type: none"> <li>Centralizes IP data in a unified database, providing easy and fast access to information.</li> <li>IP directory is built on a per organization basis, allowing management of overlapping IP spaces.</li> </ul>
<b>Focused on management</b>	<ul style="list-style-type: none"> <li>Provides management of existing, in-place Microsoft DNS and DHCP servers – no changes required to the current infrastructure.</li> </ul>
<b>Full synchronization of DNS and DHCP data</b>	<ul style="list-style-type: none"> <li>Automatic import of DNS/DHCP data (including active leases) from existing Microsoft servers.</li> <li>Changes to DNS and DHCP configurations made via Microsoft Management Console (MMC) are automatically reflected in the Infoblox IPAM WinConnect database.</li> <li>Changes to DNS and DHCP configurations made via the Infoblox IPAM WinConnect GUI are instantly visible in Microsoft's DNS/DHCP MMC plug-ins.</li> </ul>
<b>View and modify information for individual hosts</b>	<ul style="list-style-type: none"> <li>Uses IP and/or MAC addresses as a key to store information.</li> <li>Allows easy IP provisioning.</li> <li>Powerful search tool enables fast, easy access to DNS and DHCP data.</li> </ul>
<b>Efficient and intuitive navigation</b>	<ul style="list-style-type: none"> <li>Web GUI provides dedicated views for IP, DNS, and DHCP.</li> <li>Navigation is tree-based, allowing fast information lookup.</li> </ul>
<b>Modular and secure design</b>	<ul style="list-style-type: none"> <li>Communication components are SSL encrypted.</li> </ul>
<b>User-based profiles and parameters</b>	<ul style="list-style-type: none"> <li>Provides fine control of allowed user actions, based on domain (IP, DHCP, DNS) and operation.</li> <li>Constrains users to specific data zones (subnets, DNS zones, DHCP servers, etc.)</li> </ul>

Managed Items: The Infoblox IPAM WinConnect system manages the following global items:	
<b>Integrated IP directory</b>	<ul style="list-style-type: none"> <li>Base unit containing organization items and full IP range.</li> </ul>
<b>Focused on management</b>	<ul style="list-style-type: none"> <li>Represents an individual interacting with an Infoblox IPAM WinConnect system, constrainable by parameters, authenticated against the Infoblox IPAM WinConnect database.</li> </ul>
<b>Full synchronization of DNS and DHCP data</b>	<ul style="list-style-type: none"> <li>A non-invasive process that communicates with a managed service (DHCP, DNS) on a Microsoft server.</li> </ul>

Managed Items: Infoblox IPAM WinConnect manages the following items at an organization-level scope:	
<b>Location</b>	<ul style="list-style-type: none"> <li>Unit representing a corporate entity. A location can be parented to any other location and can be associated with a set of subnets.</li> </ul>
<b>Subnet</b>	<ul style="list-style-type: none"> <li>Represents a piece of the IP addressing range (based on CIDR). Subnet hierarchy is automatically updated.</li> </ul>
<b>Host</b>	<ul style="list-style-type: none"> <li>Models a network device using the IP and/or MAC address, and specific attributes (such as name, class, asset tag, and additional, user-defined information).</li> </ul>
<b>Contact</b>	<ul style="list-style-type: none"> <li>Models an individual which can be associated with location or subnet.</li> </ul>
<b>Document</b>	<ul style="list-style-type: none"> <li>Data files (such as maps or network diagrams) can be associated with a location or subnet, and can be retrieved by users.</li> </ul>
<b>Class</b>	<ul style="list-style-type: none"> <li>Models a device type that can characterize a host (such as desktop, server, printer, router, etc).</li> </ul>

## CORE FUNCTIONS

### IP directory is built and updated from:

- DNS configuration
- DHCP configuration
- DHCP leases
- Auto discovery on the network
- Import of CSV files

### IP directory may be browsed and edited with the following views:

- IP views:
  1. Expandable tree view of hierarchical subnets
  2. Expandable tree view of hierarchical locations with associated subnets per location node
- DHCP views:
  1. DHCP servers
  2. DHCP pools
  3. DHCP reservations
- DNS views:
  1. DNS servers list
  2. DNS zones

### Users interacting with Infoblox IPAM WinConnect data can be constrained by profiles and parameters:

- Profile
  - Each user can be assigned a profile (none, reader, operator, administrator) on a per domain basis (IP, DNS, DHCP).
- Parameters
  - Each user can be constrained to a specific set of data. Default scheme is to deny all and authorize ranges explicitly.
  - Users' data access and admin rights can be limited per organization:
    1. On the IP range, granting only portions or the full range.
    2. On the DHCP servers, allowing only specific servers or all servers.
    3. On the DNS servers/zones, allowing only specific servers/zones or all.

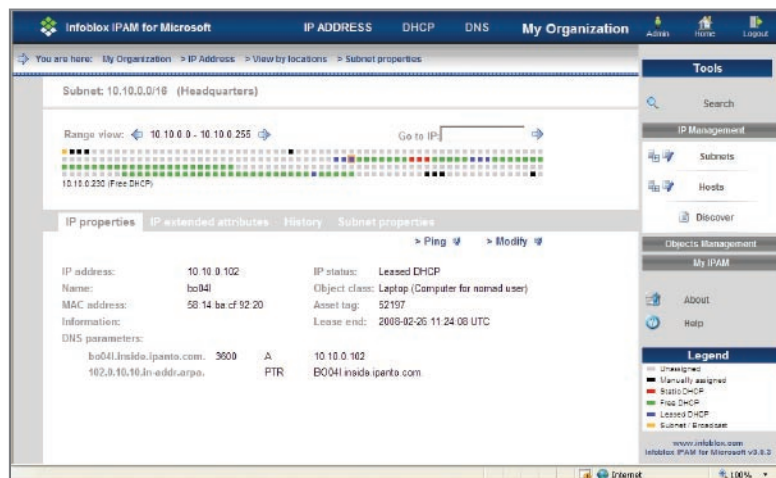


Figure 3. IP addresses view: Provides subnet IP usage summary at-a-glance, and details information on the IP address selected such as host-name, MAC address, asset tag, DNS information, and device location.

## ARCHITECTURE OVERVIEW

The Infoblox IPAM WinConnect system is delivered on Infoblox appliances running the Infoblox NIOS operating system. The NIOS OS is security-hardened and supports easy setup of the appliance and enables simple software updates. Infoblox IPAM WinConnect Connectors provide the link between the Infoblox IPAM WinConnect hardware and the Microsoft servers, and use AD domain membership to establish appropriate access rights. Infoblox IPAM WinConnect Connectors can be configured in read-only mode for those users that want to provide centralized data monitoring but do not want to enable any configuration changes to Microsoft DNS and DHCP services from the Infoblox IPAM for WinConnect GUI.

Infoblox IPAM WinConnect offers a powerful command-line interface (CLI) which enables manual or programmatic access to all commands and data from 3rd party applications.

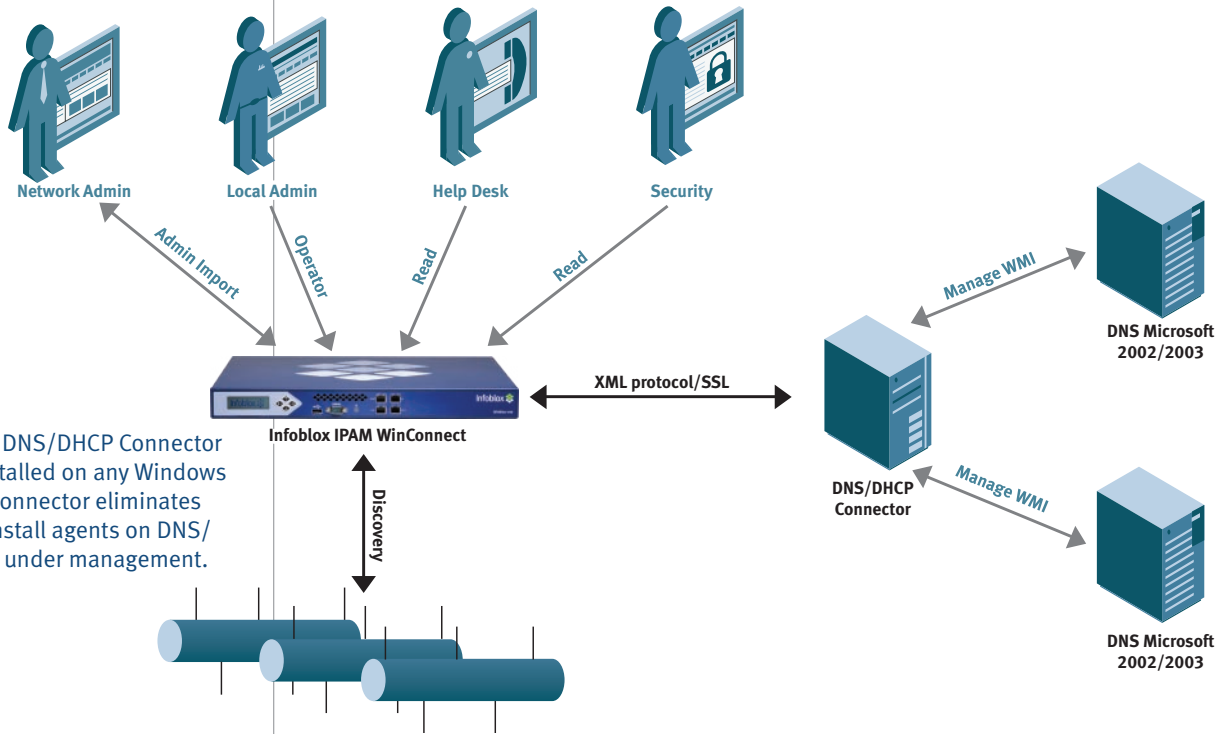


Figure 4. The DNS/DHCP Connector Module is installed on any Windows Server. The Connector eliminates the need to install agents on DNS/DHCP servers under management.

### Key Architectural Benefits:

- One connector can manage up to 15 servers, several connectors can be installed
- Managing one DNS server in an AD domain is enough, no need to manage all of them
- Discovery will register the IP addresses missing from DNS/DHCP

## Architecture – Infoblox IPAM WinConnect Platforms

INFOBLOX PLATFORM	CAPACITY
Infoblox-250	2,000 active IP addresses
Infoblox-550	5,000 active IP addresses
Infoblox-1050	30,000 active IP addresses
Infoblox-1550	100,000 active IP addresses
Infoblox-1552	100,000 active IP addresses

## Architecture – Compatible DNS / DHCP Servers

PLATFORM
Microsoft Windows 2000
Microsoft Windows 2003

### Infoblox product warranty and services

The standard hardware warranty is for a period of one year. The system software has a 90-day warranty that will meet published specifications. Optional service products are also available that extend the hardware and software warranty. These products are recommended to ensure the appliance is kept updated with the latest software enhancements and to ensure the security and availability of the system. Professional services and training courses are also available from Infoblox. Information in this document is subject to change without notice. Infoblox Inc. assumes no responsibility for errors that appear in this document.